



Clayhanger, Guildford, Surrey GU4 7XT

Asking Price £465,000

Located in a quiet cul de sac in a highly popular location within the catchment of top local schools, this beautifully presented two double bedroom house boasts two bathrooms and allocated parking.



Description

Beautifully presented, recently built two double bedroom house positioned within a quiet cul de sac location on a private road.

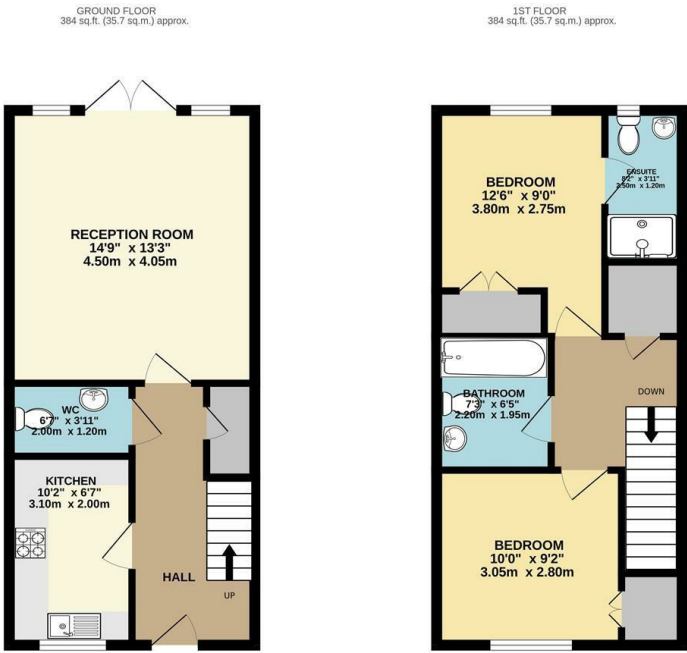
The ground floor comprises an entrance hall, modern kitchen with integral appliances, cloakroom, large lounge leading to the garden and a large storage cupboard.

Upstairs the property comprises two large double bedrooms with ample built in storage, an en suite to the master bedroom and an additional family bathroom with shower.

The property further features a lawned garden with a patio and its own shed and allocated parking.

This beautifully presented house has been built to an exceptional standard and features the latest technology to ensure high energy efficiency and therefore reducing energy bills.

The property sits within the catchment area of top local schools and both the A3 and Guildford town centre are within very easy access.



TOTAL FLOOR AREA: 768 sq.ft. (71.3 sq.m.) approx.
Whilst every attempt has been made to ensure the accuracy of the foregoing coloured band, measurements of doors, windows, rooms and any other items are approximate and no responsibility is taken for any error, omission or mis-statement. This plan is for illustrative purposes only and should be used as such by any prospective purchaser. The services, systems and appliances shown have not been tested and no guarantee as to their operability or efficiency can be given.
Made with Metropix C2024

